

# 3500 SERIES

3500 Vinyl Single-Hung Window

**MIWD**

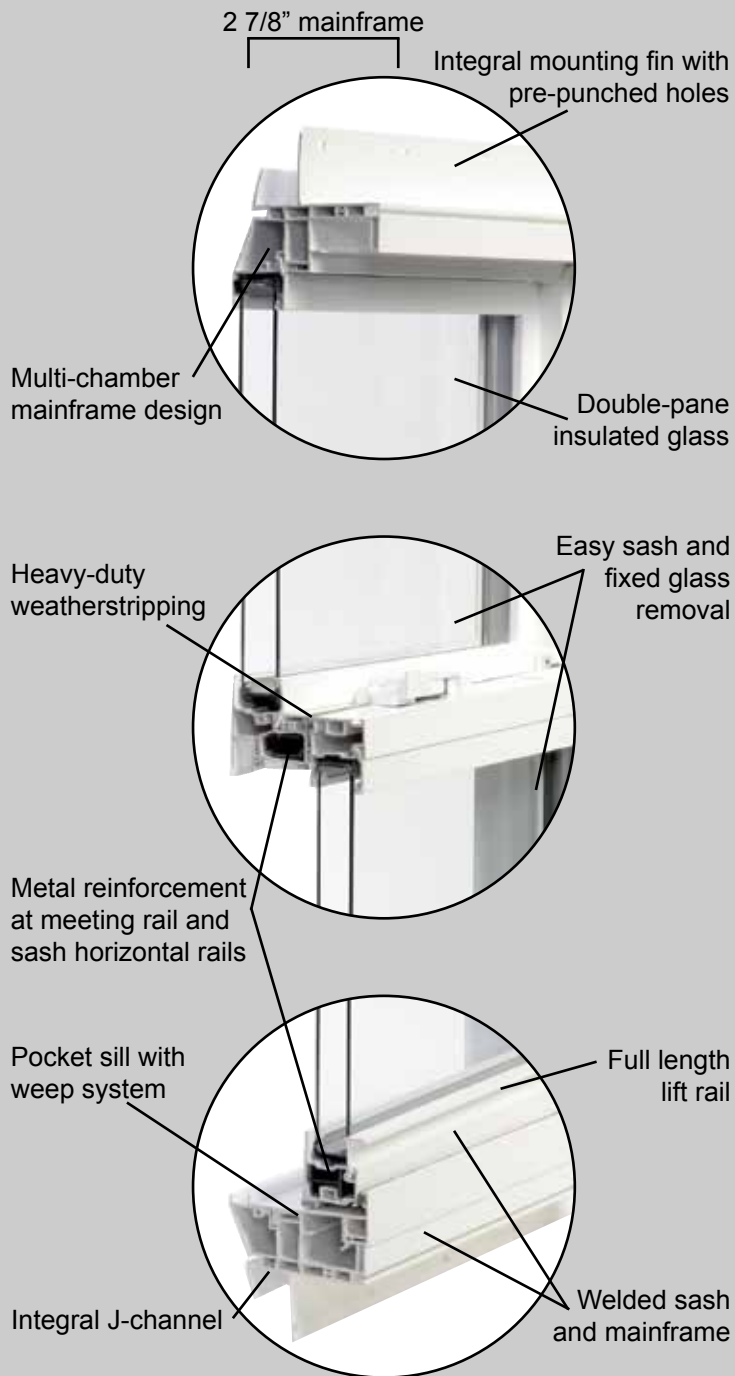


## Quality, Durability, and Energy Efficiency

The 3500 Vinyl Single-Hung Window offers crafted features that provide exceptional durability and energy efficiency. With standard features that include a pre-punched mounting fin and easily removable sash, the 3500 window is designed for builders. A closer look reveals details like a full-length lift rail and metal reinforcements at the meeting rails. Factory options include a snap-in brickmould profile and extension jambs.

The MI Windows and Doors 3500 Series Windows offer great value, durability, and energy efficiency. 3500 Series Windows are available in single-hung, sliding, picture window, and specialty shape configurations.

## Take a closer look at the 3500 Single-Hung Window



## Color Options



White



Almond

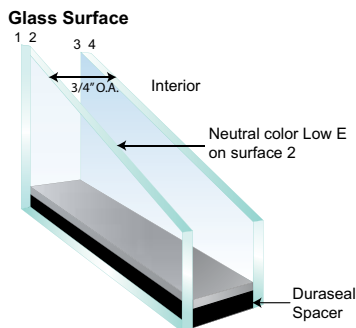
# 3500 SERIES

3500 Vinyl Single-Hung Window



## Glass Options

Insulated glass packages are offered as an upgrade to help you save heating and cooling costs while keeping your home more comfortable. In warm weather, insulated glass reduces solar heat gain, minimizing interior glare and lowers interior glass temperature, saving energy and making your home more comfortable. In cool weather, insulated glass provides outstanding thermal performance with warmer interior glass surfaces to help save energy and maintain comfort during a cold winter.



Meets ENERGY STAR® requirements in North, North-Central, and South Central Zones.

\*Argon gas optional in all Low-E glass packages.

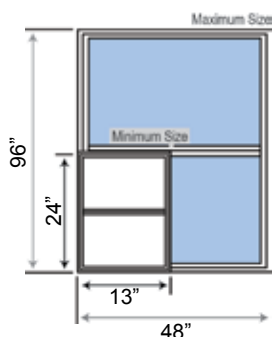


## High Performance Option

The 3500 Series Vinyl Window can be upgraded to achieve High Performance status. With the added reinforcement throughout the sash, the 3500HP and 3540 Series Vinyl Window meets the High Performance requirement set by the American Architectural Manufacturers Association (AAMA).



## Min. and Max. Frame Sizes



\*See size guide for complete sizing specifications.

## Grid Options

Flat and sculptured grids are available in standard and custom patterns.



5/8" or 7/8" Flat Grids (between the glass)

15/16" or 11/16" Sculptured Grid (between the glass)



Colonial



9-Lite Perimeter



6-Lite Perimeter



3500\_Product\_Info\_102314



www.MIWD.com 717.365.3300





MI WINDOWS AND DOORS

650 WEST MARKET STREET • GRATZ, PA • 17030-0370

# SPECIFICATIONS

## SERIES 3500 VINYL SINGLE HUNG WINDOW

**MAIN FRAME** - Shall be made from rigid polyvinylchloride (PVC) multi-hollow extrusions which have a minimum wall thickness of .050". Main frame shall be welded together at the corners. Overall frame depth is 2-7/8".

**MOVEABLE SASH** - Shall be made from rigid polyvinylchloride (PVC) extrusions which have a minimum wall thickness of .062". Sash to be of welded corner construction. Sash to have metal reinforcement in horizontal members.

**FIXED MEETING RAIL** - Shall be made from a rigid PVC hollow extrusion with a .050" wall thickness. Meeting rail shall be secured to the main frame with three screw fasteners through injection molded end caps attached to the meeting rail with three screws. **Meeting rail to have metal reinforcement.** Bottom of meeting rail to have foam bulb to seal against the moveable sash.

**SILL INSERT** - Shall be made from rigid PVC with a wall thickness of .060". It shall "snap fit" into the main frame sill. Sill insert to be sealed with double-sided foam tape before insertion. Inside joint between sill snap-in and main frame to be sealed.

**GLAZING** - Top, or fixed, glass panel shall consist of 3/4" thick insulated glass. Fixed (top) glass to be held securely in place by the use of a single-sided adhesive foam tape at the exterior and a rigid PVC glazing bead, which has a minimum wall thickness of .070", at the interior. Low-E glass, argon gas and other glazing options available.

**Note:** 7/8" thick insulated glass used on select configurations.

Moveable sash glass panel shall consist of 3/4" thick insulated glass. Glass to be held securely in place with **silicone** and with rigid, extruded, vinyl, interior glazing beads.

**Note:** 7/8" thick insulated glass used on select configurations.

**WEATHERSTRIPPING** - Movable sash shall have double strips of center fin weatherstripping on each stile and one on the top rail. Sill insert shall have one strip of center fin weatherstripping. Bottom of moveable sash fixed meeting rail to contain one foam bulb.

**HARDWARE** - Moveable sash balance mechanism to consist of stainless steel constant force springs. Two metal cam-type sweep locks to be located equidistant from each end of the top sash rail. Two sweep lock keepers to be fastened to the fixed meeting rail. One plastic tilt latch shall be used at each end of the sash top rail. All screws, clips, and other fasteners shall be made of non-corrosive materials compatible with **reinforcements**.

**SCREEN** - Half screen only. Screen to be made from roll-formed aluminum, 5/16" x 3/4" with a .020" wall thickness. Screen cloth to be made from 18x16 fiberglass mesh and held securely by flexible, vinyl spline. Screens shall meet ANSI/SMA standard 1004-87. **(NOTE:** Insect screens are intended only to provide reasonable insect control. They are not intended to prevent people or objects from exiting the window or to provide security against forced entry.)

**INSTALLATION** - To be done by others. Frame must be installed straight, plumb and level, without twisting, bowing or springing. Manufacturer's recommended installation procedures are to be used. Installer should make final adjustments to ensure proper sash operation and window performance.

**NOTE:** MI WINDOWS AND DOORS' designs and manufacturing methods are continually being improved. Individual products may be subject to a variation in performance. Due to this and other factors, we reserve the right to change specifications without notice. It is the sole responsibility of the purchaser/installer to be sure that the intended use of this product complies with any and all applicable buildings codes (i.e. egress, safety glass near doorways, etc.). If you require further technical information regarding this product please contact your retailer/salesman.

**A·L·I**

(Validator / Operations Administrator)

**AAMA  
CERTIFICATION PROGRAM****AUTHORIZATION FOR PRODUCT CERTIFICATION**

**MI Windows & Doors, Inc.**  
**P.O. Box 370**  
**Gratz, PA 17030-0370**

**Attn: Rick Sawdey**

The product described below is hereby approved for listing in the next issue of the AAMA Certified Products Directory. The approval is based on successful completion of tests, and the reporting to the Administrator of the results of tests, accompanied by related drawings, by an AAMA Accredited Laboratory.

1. The listing below will be added to the next published AAMA Certified Products Directory.

SPECIFICATION	RECORD OF PRODUCT TESTED			
<b>AAMA/WDMA/CSA 101/I.S.2/A440-05</b> <b>H-LC40*-914x2134 (36x84)</b> Negative Design Pressure = -50 psf				
COMPANY AND CODE	CPD NO.	SERIES MODEL & PRODUCT DESCRIPTION	MAXIMUM SIZE TESTED	
<b>MI Windows &amp; Doors, Inc.</b> <b>Code: MTL</b>	<b>7158</b>	<b>3540 SH (FIN)</b> <b>(PVC)(O/X)(IG)(INS GL)</b> <b>(REINF)(TILT)(ASTM)</b>	<b>FRAME</b> <b>914 mm x 2134 mm</b> <b>(3'0" x 7'0")</b>	<b>SASH</b> <b>867 mm x 892 mm</b> <b>(2'10" x 2'11")</b>

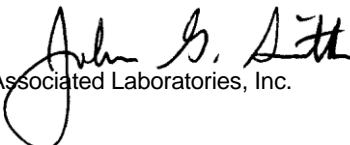
2. This Certification will expire **July 27, 2015** and requires validation until then by continued listing in the current AAMA Certified Products Directory.

3. Product Tested and Reported by: **Architectural Testing, Inc.**

Report No.: **B2133.01-109-47**

Date of Report: **August 16, 2011**

**Validated for Certification**

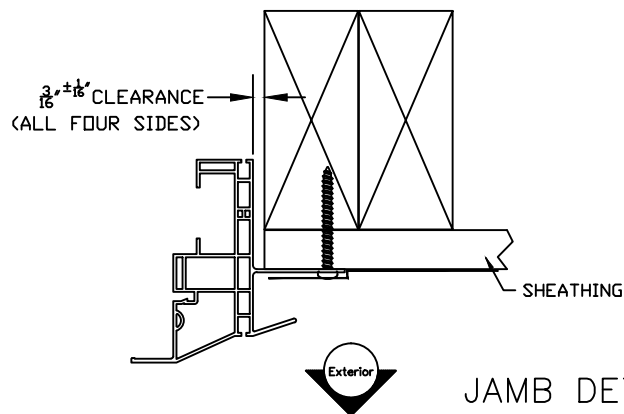
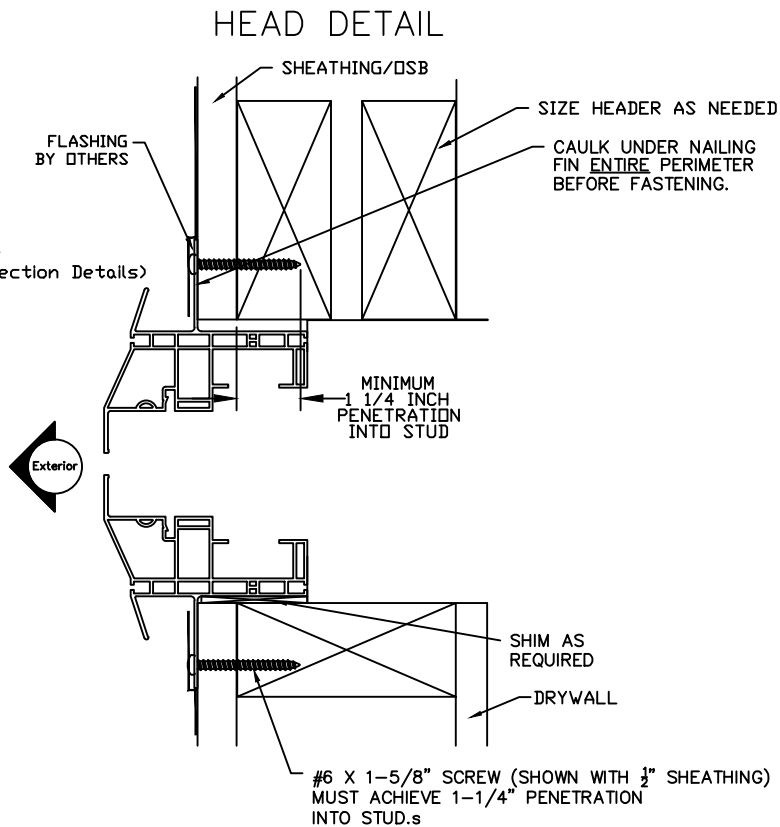
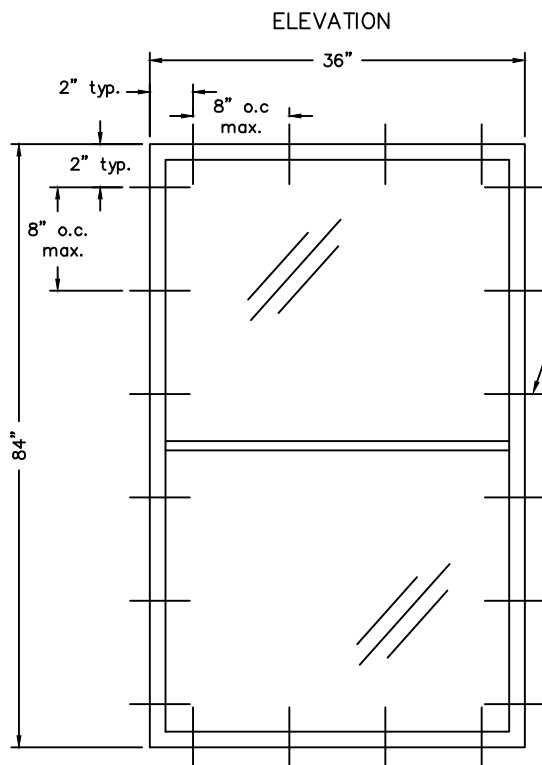
  
 Associated Laboratories, Inc.

Date: **July 10, 2012**

Cc: AAMA  
 JGS  
 ACP-04 (Rev. 1/11)

**Authorized for Certification**

  
 American Architectural Manufacturers Association



SILL DETAIL

Notes:

1. Installation depicted based off of structural test report #B2133.01-109-47.
2. Wood screws shall satisfy the National Design Specification for Wood Construction for material type and dimensional requirements.
3. Wood buck installations are assumed 2x S-P-F (G=0.42) or denser. Buck width shall be greater than the window frame width. Tapered or partial width bucks are not allowed. Wood buck shall be secured to the structure to resist all design loads.
4. Wood screw lengths shall be sufficient to guarantee 1-1/4" penetration into wood buck.
5. Maximum shim thickness of 1/4" permitted at each fastener location. Shims shall be load bearing, non-compressible type.
6. These drawings depict the details necessary to meet structural load requirements. They do not address the air infiltration, water penetration, intrusion or thermal performance requirements of the installation.
7. Installation shown is that of the test window for the size shown and the design pressure claimed. For window sizes smaller than shown, locate fasteners 2" from corners and no more than 8" on center. Design pressures of smaller window sizes are limited to that of the test window.

SIZE AND DESIGN PRESSURE CHART

FASTENER TYPE AND SPACING SHOWN WILL ALLOW DESIGN PRESSURES UP TO +40.10/-50 UNITS UP TO 36" x 84"  
(SEE TEST REPORTS FOR INDIVIDUAL UNIT SIZE AND APPLICABLE DESIGN PRESSURE LIMITATIONS)



Windows & Doors  
Gratz, PA

TITLE:

INSTALLATION INSTRUCTIONS  
& FASTENER SCHEDULE

— FIN—

PRODUCT:

3540 Single Hung

DRAWN BY:

V.M.R.

DATE:

12-14-09

CHECKED:

DATE:

SCALE:

NONE

SHEET:

1 OF 1

DWG. NO.

3540-3240 SH FIN

REV.

—

\* "NAIL FIN" IS A GENERIC TERM WHICH MEANS "MOUNTING FLANGE". (NOT TO BE CONFUSED WITH "1/2" FRONT FLANGE)